

REV/ISS	AMENDMENTS	DRAWN	CHKD	D.O.	APVD	DATE
07A	ECO - 210703					13/09/00
06A	UPDATE CIRCUITRY ECO: 21 0500 21 0585, CCO1344-001					18/07/00
5A	CN:97/10-618/97/10-614					11/12/98
4A	ADU:UPDATE COMPONENTS/DEVICES					02/07/97
3A	MOVED RX-CTCSS TRACK					
2A	SELCALLOP CONNECTIONS					5-7-96
1A	JUST A COUPLE OF SMALL MODS -NOT!					

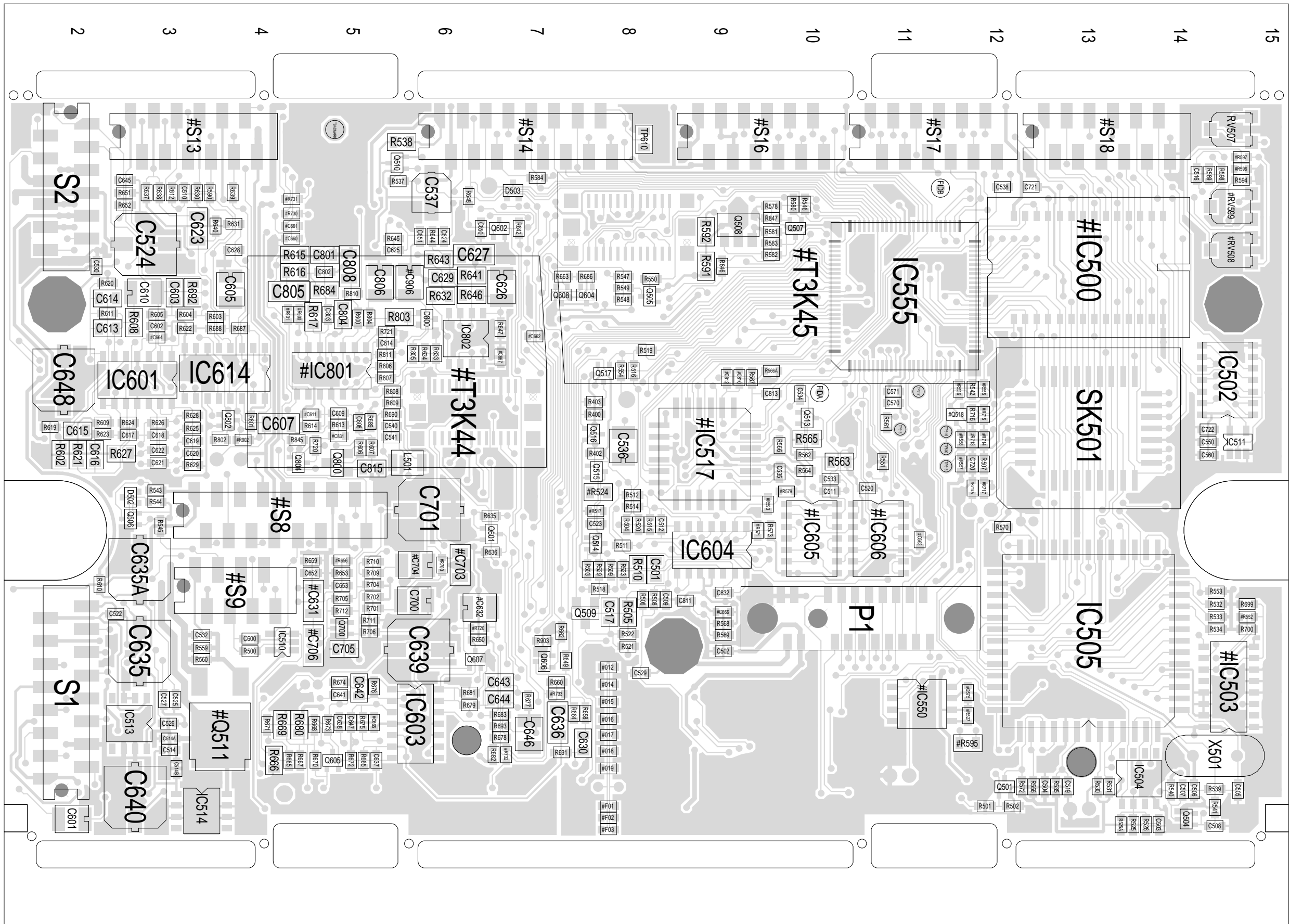
07A ECO - 210703
 06A UPDATE CIRCUITRY ECO: 21 0500 21 0585, CCO1344-001
 5A CN:97/10-618/97/10-614
 4A ADU:UPDATE COMPONENTS/DEVICES
 3A MOVED RX-CTCSS TRACK
 2A SELCALLOP CONNECTIONS
 1A JUST A COUPLE OF SMALL MODS -NOT!

REV/ISS	AMENDMENTS	DRAWN	CHKD	D.O.	APVD	DATE
07A	ECO - 210703					13/09/00
06A	UPDATE CIRCUITRY ECO: 21 0500 21 0585, CCO1344-001					18/07/00
5A	CN:97/10-618/97/10-614					11/12/98
4A	ADU:UPDATE COMPONENTS/DEVICES					02/07/97
3A	MOVED RX-CTCSS TRACK					
2A	SELCALLOP CONNECTIONS					5-7-96
1A	JUST A COUPLE OF SMALL MODS -NOT!					

07A ECO - 210703
 06A UPDATE CIRCUITRY ECO: 21 0500 21 0585, CCO1344-001
 5A CN:97/10-618/97/10-614
 4A ADU:UPDATE COMPONENTS/DEVICES
 3A MOVED RX-CTCSS TRACK
 2A SELCALLOP CONNECTIONS
 1A JUST A COUPLE OF SMALL MODS -NOT!

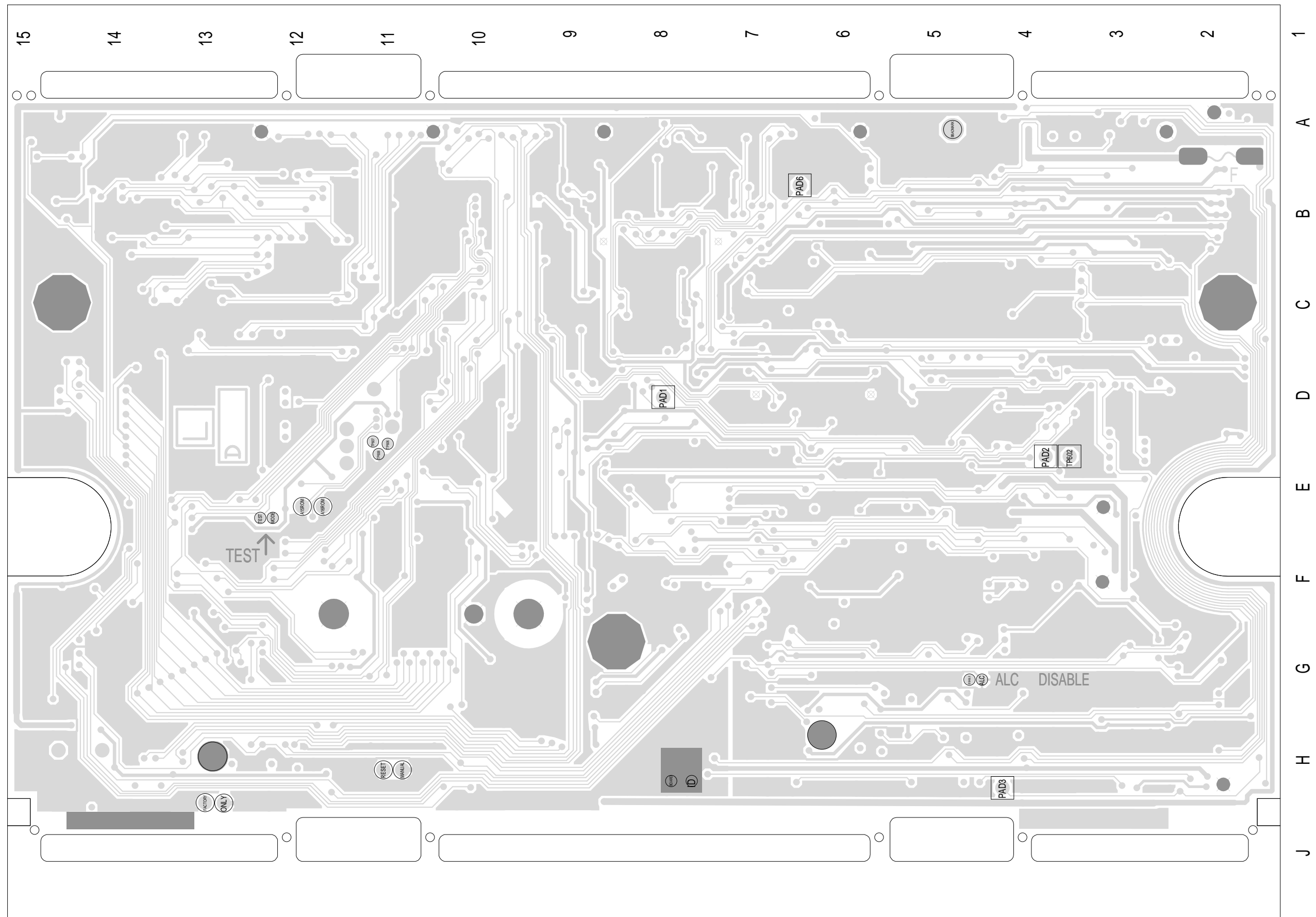
TAIT ELECTRONICS
 T2000 ENHANCED HC11 PLATFORM
 CONTROLBOARD
 PROJECT: T2000 DESIGNER: CLK FILE NAME: 134407a FILE DATE: 14-Sep-00 NO SHEETS: 2

1
A
B
C
D
E
F
G
H
J



TAIT ELECTRONICS IPN: 220-01344-07 ISS: A ID: 1.TA DATE: 14 Sep 2000
T2K ENHANCED PCB LAYOUT - TOP SIDE

Scale: 2.3:1 ; Rotation: 270 degrees



TAIT ELECTRONICS	IPN:	ISS:	ID:	DATE:
	220-01344-07	A	2.BA	14 Sep 2000
T2K ENHANCED PCB LAYOUT - BOTTOM SIDE				

Scale:2.3:1 ; Rotation: 90 degrees